

Wood Duck Box Assembly

Before starting check to have all parts to make one complete box.
They are:

Mesh crawl screen

Front with oval hole cut out

One side board

One back board

One side retainer board (shorter with angled edge)

One side opening door board (longer with angled edge to match
retainer board)

One bottom with weep holes drilled

One top board

Be sure to try and put all rough cut sides to the outside and glue over knot holes. In the pictures below, the color **red** represents glue, **blue** is possible nail areas and **green** is drilled holes for short or long decking screws.

Step 1

Staple the mesh crawl screen to the front. Align the top of the screen close to the hole. **DO NOT** pull tight the crawl screen to the front. Meaning, make the screen bow/bubble slightly in the middle to allow the ducklings something to get their feet and bills through. Affixing it tightly would be like making them rock climb up a cliff.



Step 2

Attach the back board to the side board. Glue the joint and nail.



Here, the side board is on the left and the back board is on the right. Be sure to assemble with the side board connecting into the back board.



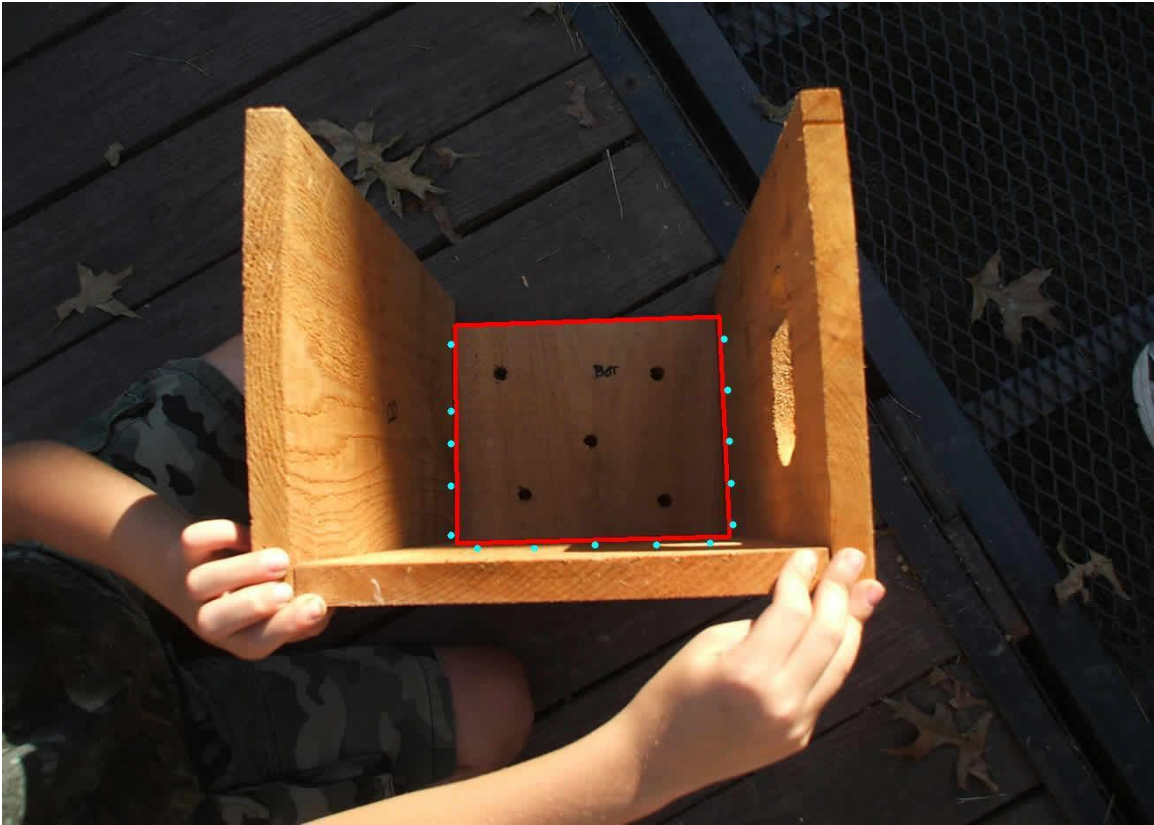
Step 3

Attach the front to the side/back assembled in Step 1. Glue the joint and nail. Here the front board attaches to the side board so the side is sandwiched between the front and back boards.



Step 4

Insert the bottom and glue the joints and nail all three sides.



Step 5

Insert the side retainer board, glue the joints and nail. Be sure to glue the inside of the bottom board where the retainer board meets.



Step 6

Align the door on the remaining open side. **DO NOT** perfectly align the top of the door with the back and front sides. **LEAVE** approximately 1/8 – 1/4 inch space at the top. This will allow the door to swing open without rubbing against the roof when installed. Once positioned correctly, drill holes that will be used for the long decking screws as hinges. Install screws through front/back boards and into swinging side door. Do not screw down tight.



Step 7

Position the roof so the back is flush (no overhang on the back) and glue the 3 joints (back, side, front). **DO NOT** glue/nail the roof section over the door.



Miscellaneous Steps

Pre-drill a hole in on the front board and slightly into the door (low, close to the area where the retainer board and swinging door meet. Lower green dot in picture of Step 6). Insert a long decking screw and finger tighten only. This screw will keep the side door securely closed.

Install a short decking screw in the lower part of the door on the side. This screw will be used to pull open the door (lower middle green dot in picture of Step 6).